

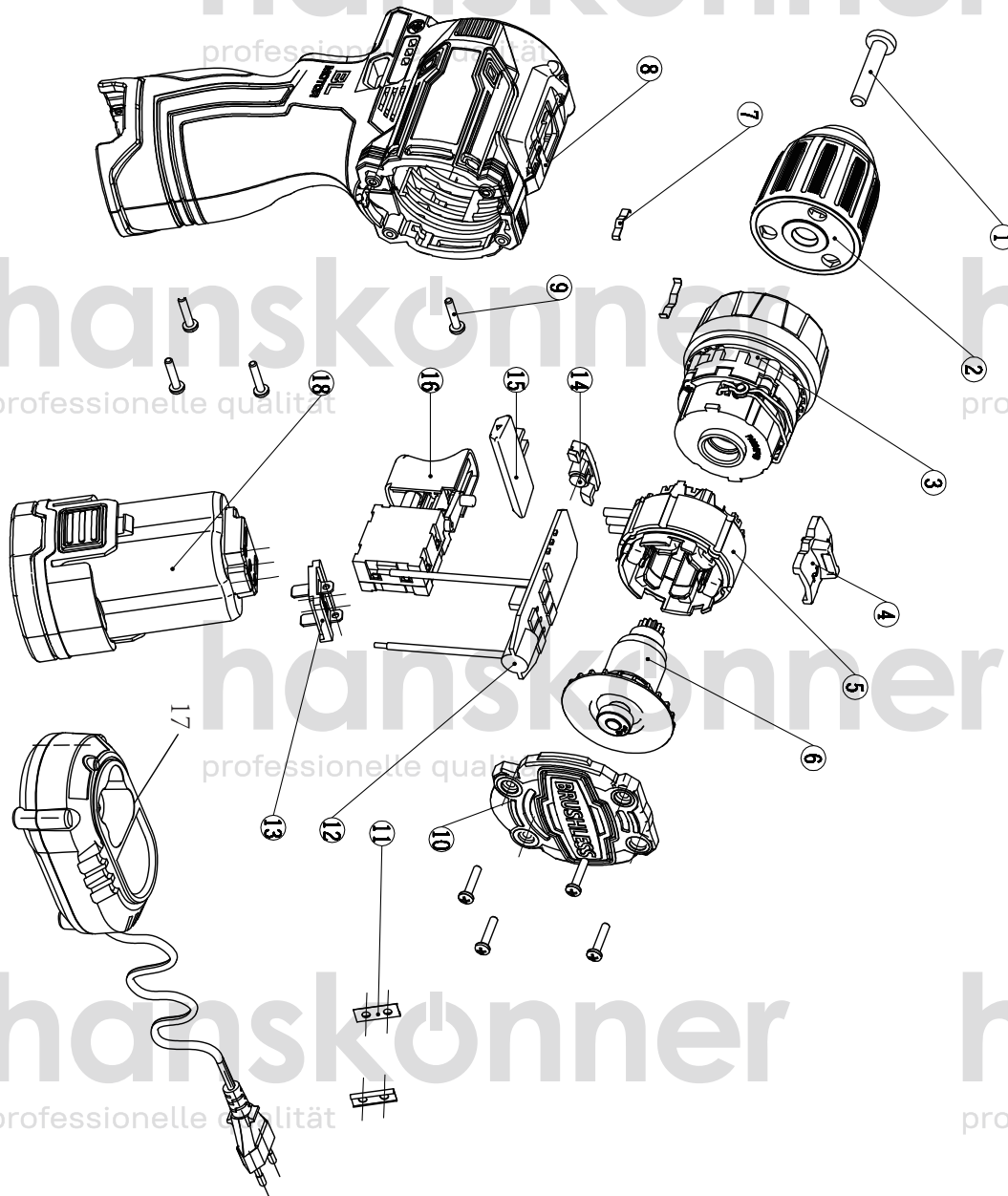
hanskonner

professionelle qualität

hanskonner

professionelle qualität

HCD1645BLC



NO.	DESCRIPTION
1	SCREW M5X16
2	CHUCK
3	GEAR BOX ASSEMBLY
4	SPEED CHANGE BUTTON
5	STATOR
6	ROTOR
7	SHRAPNEL
8	HOUSING
9	SCREW ST3X12
10	REAR HOUSING
11	CLAMP
12	MOTOR PCB
13	CONNECTION FOOT
14	LED COVER
15	DIRECTION ROD
16	SWITCH
17	CHARGER
18	BATTERY PACK

HCD1645BLC EX-RUS230620

hanskonner

professionelle qualität

hanskonner

professionelle qualität